

566HO1334 LEANINGHOUSE

SPEAK UP -ET

Holstein 840003206219213 99% RHA-I *TC *TY *TV *TL *TD

Born: August 20, 2019 aAa: 516342 DMS: 234/123

A2A2 Kappa-Casein: AA

CDCB PTAs 4/24

GTPI +2694 +590M +0.13% +60F +0.08% +41P 88% Rel.

Type +1.00 79% Rel. UDC +1.62 FLC -0.47

NM \$723 CM \$742 GM \$684 FE 174 FSAV 84 EFI 16.3%

GENOMIC DPR -0.3 PL +3.8 LIV +1.6 HLIV +1.4 SCS 2.71

Wellness Traits MAST 101 LAME 95 MET 105 RP 100

KET 108 DA 104 DWP\$® \$700 WT \$34

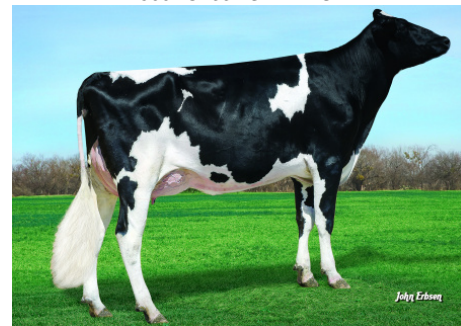
Calf Traits LIV 101 SCOURS 105 RES 108 CW \$39

Milking Speed 101 Milking Temperament 98

Calving Ease / OBS / Daughter CE: 2.0% 337 1.7%



566HO1334 SPEAK UP



566HO1334 SPEAK UP Maternal Grandam
Leaninghouse Delta 22084-ET "VG-86"

- Sire:** Mr Frazzled Aristocrat-ET
- Dam:** Leaninghouse Frtne 23809-ET "EX-92"
- MGS:** Progenesis Fortune-ET
- MGD:** Leaninghouse Delta 22084-ET "VG-86"
2-00 2x 363d 26,410 3.3 873 3.5 913
- 3rd Dam:** View-Home Shan Sacramento-ET "VG-86"
2-02 3x 365d 31,340 4.2 1308 3.3 1040
- 4th Dam:** Pine-Tree 2149Robst 4846-ET "VG-87" DOM
2-04 3x 365d 32,000 4.8 1520 3.2 1036
- 5th Dam:** Pine-Tree Zenith Sheen "VG-87" DOM
1-11 3x 305d 24,500 3.9 959 3.0 740
- 6th Dam:** Pine-Tree Martha Sheen "VG-86" DOM
1-11 3x 365d 31,210 4.2 1305 3.1 968
- 7th Dam:** Pine-Tree Missy Martha-ET "VG-86" GMD, DOM
- 8th Dam:** Wesswood-HC Rudy Missy-ET "EX-92" 3E GMD, DOM

	USDA	-2	-1	0	1	2
Stature	0.60T				█	
Strength	0.16S			█		
Body Depth	-0.46S		█			
Dairy Form	-0.60T		█			
Rump Angle	0.35S			█		
Rump Width	0.17W			█		
R Legs - Side View	-0.63S		█			
R Legs - Rear View	-0.51H		█			
Foot Angle	0.69S				█	
Feet & Legs Score	-0.30L		█			
Fore Attachment	2.69S					█
Rear Udder Height	1.60H				█	
Rear Udder Width	0.81W				█	
Udder Cleft	0.68S				█	
Udder Depth	2.28S					█
F Teat Placement	1.93C				█	
R Teat Placement	1.69C				█	
Teat Length	-1.19S		█			



WWW.IPSSIRES.COM Facebook: International Protein Sires
608-524-8086 E-mail: contact@ipssires.com