

# 566HO1293 LADYS-MANOR BAND

## SEASAW -ET

Holstein 840003136040254 100% RHA-NA \*TC \*TY \*TV \*TL \*TD  
 Born: September 27, 2016 aAa: 423156 DMS: 345/234  
 A2A2 Kappa-Casein: AB

### CDCB PTAs 4/24

**GTPI +2707** +718M +0.10% +55F +0.05% +36P 96% Rel.

Type +0.52 90% Rel. UDC +1.22 FLC +0.74

NM \$705 CM \$721 GM \$673 FE 146 FSAV -19 EFI 14.1%

199 Dtrs./73 Herds DPR +1.3 PL +4.9 LIV +3.7 HLIV +0.2 SCS 2.59

Wellness Traits MAST 106 LAME 102 MET 95 RP 91

KET 105 DA 101 DWP\$® \$772 WT \$125

Calf Traits LIV 94 SCOURS 100 RES 96 CW -\$34

Milking Speed 101 Milking Temperament 102

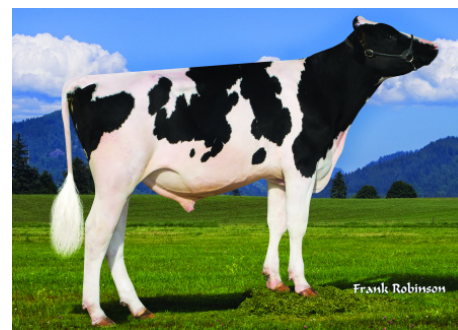
Calving Ease / OBS / Daughter CE: 2.0% 313 2.4%

Actual Daughter Avg. Score (4/24): 79.6 AASC: 82.5

Actual Daughter Avg. Production (4/24): 29,210 4.3% 1258F 3.2% 949P

- Sire:** Wa-Del Yoder Bandares-ET  
**Dam:** Ladys-Manor SSH Seashell-ET "VG-87" DOM  
 3-06 2x 364d 36,950 4.0 1469 3.0 1093  
 Life: 1295d 117,270 4.1 4843 3.0 3490  
**MGS:** Cogent Supershot  
**MGD:** Seagull-Bay Mogul 1725-ET "EX-90"  
 3-06 2x 305d 28,577 3.8 1083 2.9 829  
**3rd Dam:** T-C-G Observer May-ET "VG-86"  
 2-01 3x 192d 18,470 3.7 686 2.9 537  
**4th Dam:** T-C-G Shottle Minnow "EX-94" 2E  
 5-10 3x 365d 44,620 4.7 2101 2.7 1191  
**5th Dam:** SeagullbayJJ Toys Mae "VG-87"  
 1-11 3x 365d 35,040 3.1 1082 2.8 997  
**6th Dam:** Seagull-Bay Oman Mirna-ET "VG-87" DOM  
 2-01 3x 305d 28,850 3.6 1034 3.0 861

	USDA	-2	-1	0	1	2
Stature	0.15T					
Strength	0.21S					
Body Depth	-0.45S					
Dairy Form	-0.61T					
Rump Angle	0.17S					
Rump Width	0.11W					
R Legs - Side View	-1.21S					
R Legs - Rear View	1.36S					
Foot Angle	0.66S					
Feet & Legs Score	0.58H					
Fore Attachment	1.56S					
Rear Udder Height	1.67H					
Rear Udder Width	1.22W					
Udder Cleft	0.20S					
Udder Depth	1.06S					
F Teat Placement	0.60C					
R Teat Placement	0.44C					
Teat Length	-1.01S					



566HO1293 SEASAW



566HO1293 SEASAW Daughter:  
 Bosside Seasaw Abby "VG-85"  
 Owner: John & Tineke Boschma, WI



566HO1293 SEASAW Dam:  
 Ladys-Manor SSH Seashell-ET "VG-87" DOM



566HO1293 SEASAW Grandam:  
 Seagull-Bay Mogul 1725-ET "EX-90"



WWW.IPSSIRES.COM Facebook: International Protein Sires  
 608-524-8086 E-mail: contact@ipssires.com