

566HO1303 MISTY-MOOR

PORSCHE -ET

Excellent-92

Holstein 840003144934001 99% RHA-I *TC *TY *TV *TL *TD

Born: August 30, 2017 aAa: 315246 DMS: 345/135

A2A2 Kappa-Casein: BB

CDCB PTAs 4/24

GTPI +2569 +1146M -0.04% +32F +0.00% +36P 95% Rel.

Type +1.18 87% Rel. UDC +0.84 FLC +0.90

NM \$592 CM \$600 GM \$580 FE 134 FSAV 196 EFI 12.4%

132 Dtrs./35 Herds DPR +0.8 PL +3.9 LIV +0.7 HLIV +1.2 SCS 2.65

Wellness Traits MAST 106 LAME 98 MET 102 RP 102

KET 99 DA 95 DWP\$® \$636 WT \$109

Calf Traits LIV 100 SCOURS 102 RES 104 CW \$14

Milking Speed 99 Milking Temperament 103

Calving Ease / OBS / Daughter CE: 2.7% 324 2.6%

Actual Daughter Avg. Score (4/24): 78.7 AASC: 81.8

Actual Daughter Avg. Production (4/24): 29,539 3.9% 1165F 3.1% 927P

Sire: DG Charley

Dam: Misty-Moor Delta Pailou-ET "VG-88"
5-00 2x 365d 50,710 3.7 1860 3.0 1502

MGS: Mr Mogul Delta 1427-ET

MGD: Misty-Moor Ptrn Pilvar-ET "GP-83"
3-02 3x 305d 25,860 3.9 1020 3.1 807

3rd Dam: All-Riehl Massey Perfume "VG-86" GMD, DOM
Life: 1474d 135,130 3.3 4449 2.9 3873
5-02 2x 365d 45,390 3.0 1378 2.7 1233

4th Dam: All-Riehl Throne Prime-ET "EX-90" GMD, DOM
3-07 2x 365d 34,160 3.7 1247 2.9 979
Life: 1535 115,930 3.6 4227 3.0 3432

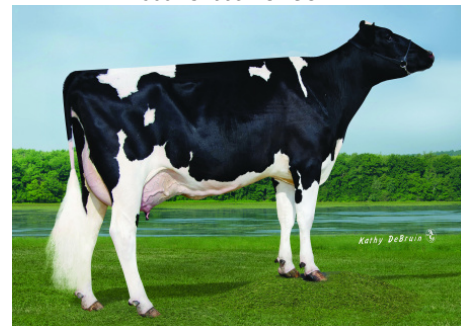
5th Dam: Brookburn Rudolph Pansy-ET "EX-93" 3E DOM
5-01 2x 365d 36,470 3.4 1245 3.0 1102

6th Dam: Brookburn Prissy Laban-TW "EX-90" DOM

| | USDA | -2 | -1 | 0 | 1 | 2 |
|--------------------|--------|----|----|---|---|---|
| Stature | 1.06T | | | | | |
| Strength | 0.28S | | | | | |
| Body Depth | 0.50D | | | | | |
| Dairy Form | 1.02O | | | | | |
| Rump Angle | 0.60S | | | | | |
| Rump Width | 0.35W | | | | | |
| R Legs - Side View | 0.49C | | | | | |
| R Legs - Rear View | 0.84S | | | | | |
| Foot Angle | 0.84S | | | | | |
| Feet & Legs Score | 1.14H | | | | | |
| Fore Attachment | 1.13S | | | | | |
| Rear Udder Height | 1.13H | | | | | |
| Rear Udder Width | 1.05W | | | | | |
| Udder Cleft | 0.73S | | | | | |
| Udder Depth | 0.90S | | | | | |
| F Teat Placement | 1.35C | | | | | |
| R Teat Placement | 1.02C | | | | | |
| Teat Length | -0.74S | | | | | |



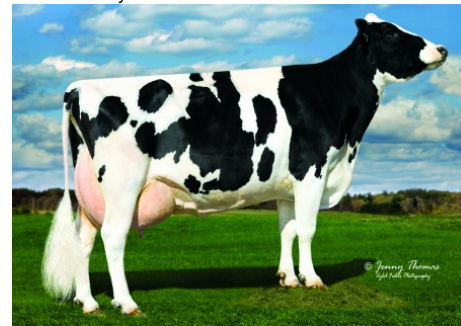
566HO1303 PORSCHE



566HO1303 PORSCHE Daughter
SRD-KD Porsche 11026
Owner: Stone-Ridge Dairy, Illinois



566HO1303 PORSCHE's Dam:
Misty-Moor Delta Pailou-ET "VG-88"



566HO1303 PORSCHE's 3rd Dam:
All-Riehl Massey Perfume "VG-86" GMD, DOM



International Protein Sires

WWW.IPSSIRES.COM Facebook: International Protein Sires
608-524-8086 E-mail: contact@ipssires.com