

566HO1273 MIDAS-TOUCH DUKE

JARGON -ET

Holstein 840003136887521 99% RHA-I *TC *TY *TV *TL *TD

Born: May 20, 2016 aAa: 342156 DMS: 345/135

A1A1 Kappa-Casein: AB

CDCB PTAs 4/24

GTPI +2424 +1801M -0.05% +53F -0.04% +45P 94% Rel.

Type +0.72 89% Rel. UDC +1.34 FLC -0.64

NM \$412 CM \$411 GM \$351 FE 154 FSAV -64 EFI 10.2%

112 Dtrs./33 Herds DPR -3.0 PL +0.3 LIV -2.9 HLIV +0.5 SCS 2.77

Wellness Traits MAST 100 LAME 100 MET 102 RP 103

KET 101 DA 100 DWP\$® \$528 WT \$46

Calf Traits LIV 99 SCOURS 102 RES 100 CW \$1

Milking Speed 95 Milking Temperament 102

Calving Ease / OBS / Daughter CE: 2.9% 124 3.6%

Actual Daughter Avg. Score (4/24): 79.6 AASC: 82.2

Actual Daughter Avg. Production (4/24): 30,074 4.0% 1193F 3.1% 921P

Sire: S-S-I Montross Duke-ET

Dam: Seagull-Bay S Jillian-ET "VG-87" DOM
2-01 3x 365d 39,190 3.0 1192 3.0 1183

MGS: Coyne-Farms Jacey CRI-ET

MGD: Ammon-Peachey Shauna-ET "EX-92" GMD, DOM
6-03 3x 365d 40,290 3.7 1479 3.1 1233
Life: 1336d 136,050 4.1 5543 3.2 4295

3rd Dam: Pine-Tree Martha Sheen-ET "VG-86" DOM
1-11 3x 365d 31,210 4.2 1305 3.1 968

4th Dam: Pine-Tree Missy Martha-ET "VG-86" GMD, DOM
2-02 3x 365d 34,730 3.6 1266 3.1 1070

5th Dam: Wesswood-HC Rudy Missy-ET "EX-92" 3E GMD, DOM
4-11 3x 365d 40,880 4.1 1665 3.4 1385

6th Dam: Wesswood Elton Mimi "EX-90" GMD, DOM
3-05 2x 365d 35,380 3.3 1160 3.0 1054

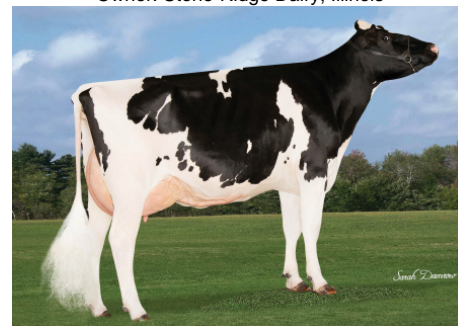
| | USDA | -2 | -1 | 0 | 1 | 2 |
|--------------------|--------|----|----|---|---|---|
| Stature | 0.75T | | | | █ | |
| Strength | 1.13S | | | | █ | |
| Body Depth | 0.92D | | | | █ | |
| Dairy Form | 1.25O | | | | █ | |
| Rump Angle | 1.24S | | | | █ | |
| Rump Width | 1.16W | | | | █ | |
| R Legs - Side View | -0.22S | | | █ | | |
| R Legs - Rear View | -0.90H | | █ | | | |
| Foot Angle | -0.15L | | | █ | | |
| Feet & Legs Score | -0.32L | | | █ | | |
| Fore Attachment | 0.67S | | | | █ | |
| Rear Udder Height | 2.14H | | | | █ | █ |
| Rear Udder Width | 3.22W | | | | █ | █ |
| Udder Cleft | 0.79S | | | | █ | |
| Udder Depth | -0.16D | | | █ | | |
| F Teat Placement | 0.55C | | | | █ | |
| R Teat Placement | 0.91C | | | | █ | |
| Teat Length | -0.15S | | | █ | | |



566HO1273 JARGON



566HO1273 JARGON Daughter:
SRD-KD Jargon 9708
Owner: Stone-Ridge Dairy, Illinois



566HO1273 JARGON Daughter:
SRD-KD Jargon 8739
Owner: Stone-Ridge Dairy, Illinois



566HO1273 JARGON Dam:
Seagull-Bay S Jillian-ET "VG-87" DOM



International Protein Sires

WWW.IPSSIRES.COM Facebook: International Protein Sires
608-524-8086 E-mail: contact@ipssires.com